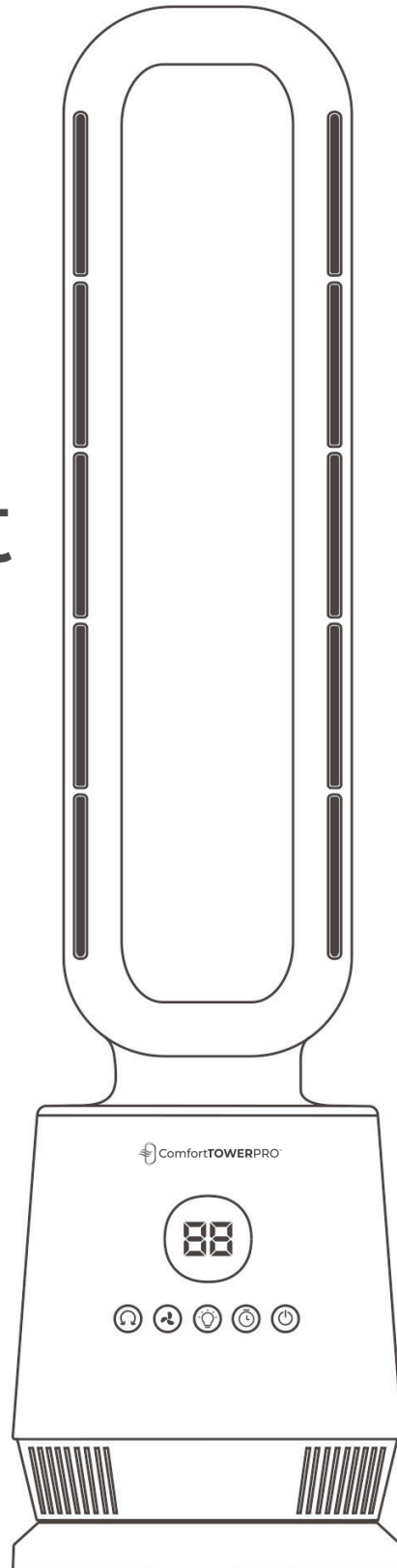




Comfort
TOWER
PRO™



USER MANUAL

Comfort Tower PRO
Heating and Cooling Bladeless Fan

READING AND STORING THE USER MANUAL

Before using this product, please read through this manual carefully paying particular attention to the safety instructions.

Failure to do so may result in personal injury or damage to the product. Save this instruction manual for future reference. Ensure the user manual is included when passing the product on to any third parties.

IMPORTANT SAFETY INSTRUCTIONS FOR PROPER USE

When using electrical appliances, basic safety precautions should always be followed. Only use the product as described in this user manual. Any other use is considered improper and may result in damage to persons or property.

The manufacturer or vendor cannot be held liable for damages or injury incurred through improper or incorrect use.

- Read and familiarize yourself with all operating instructions before using this Comfort Tower PRO Bladeless Fan & Heater.
- Before plugging your unit into the power outlet, visually check that the unit is intact and has not suffered any damage.
- **DO NOT** use this product with a timer, separate remote-control system or any other device.
- This appliance can be used by children aged 8 years and older and persons with reduced physical, sensory, and/or mental capabilities if they have been given instruction on how to use this appliance and understand the hazards involved. Children should not play with the appliance. Cleaning and user maintenance should not be performed by children without supervision.
- Close supervision is required when using this appliance near children.
- **NEVER** leave this appliance within reach of children.
- Children less than 3 years of age should be kept away unless continuously supervised.
- **DO NOT** immerse the appliance or its cord in water or any other liquids.
- **DO NOT** leave the appliance unattended during use.
- Always use this appliance on a solid, level, surface.
- **DO NOT** use this appliance outdoors.

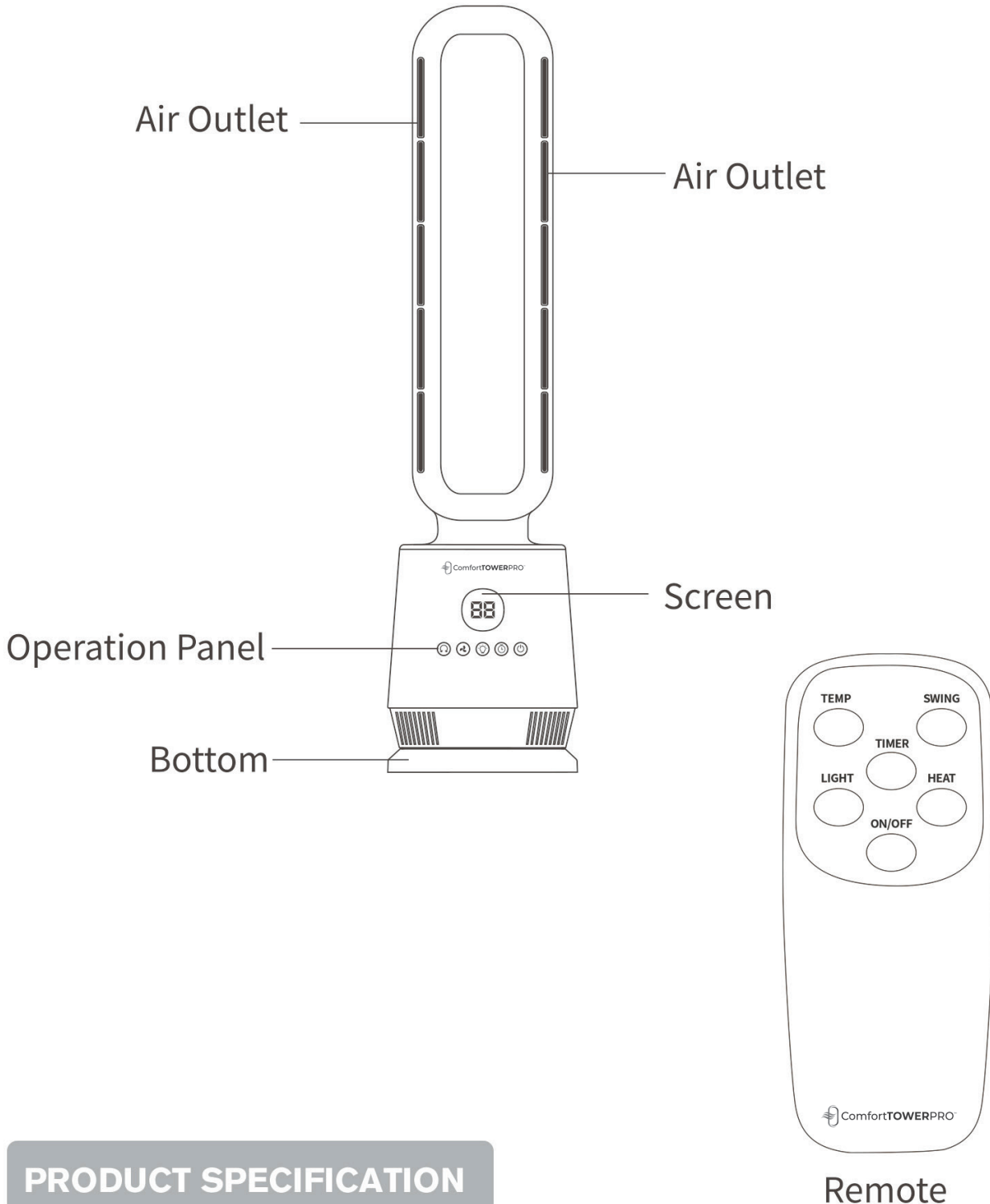
-
- It is imperative to unplug the power cord when appliance is not in use, before it is cleaned and while being repaired.
 - Repairs to electrical appliances should only be performed by qualified personnel. Improper repairs may place user at serious risk.
 - **DO NOT** operate this appliance with a damaged plug or cord, after a malfunction or after being dropped or damaged in any way.
 - Regular checks should be carried out on the power cord to ensure no damage is evident. Should there be any signs of damage the appliance should **NOT** be used.
 - If the power cable is damaged, it should only be replaced by suitably qualified personnel in order to avoid a hazard.
 - **DO NOT** allow the power cord to hang over sharp edges or come in contact with hot surfaces.
 - **DO NOT** run the power cord under carpets, rugs, etc.
 - This appliance is intended for household use only and should not be used for industrial purposes.
 - **DO NOT** use any accessories or attachments with this appliance other than those supplied or recommended by the supplier.
 - **DO NOT** use this appliance for anything other than its intended use.
 - **DO NOT** push objects (including fingers) into any openings as this could cause injury, damage to the appliance and/or electric shock.
 - Unplug after each use. To unplug from outlet grasp the plug, not the cord.



WARNING! In order to avoid overheating, **DO NOT COVER the heater.**

- Ensure appliance is situated in an open area, do not allow it to come in contact with cupboards, curtains, wall coverings, clothing or other flammable materials.
- **DO NOT** install the appliance directly below an electrical socket.
- Allow the unit to cool before storage.
- Before cleaning, disconnect the appliance from the power outlet and allow to cool.
- Never place the appliance near flammable material or high pressure containers. (e.g. paper, wood, petrol, solvents, spray canisters, etc.)
- The appliance should not be installed in areas which have a fire-risk, such as garages, stables or wooden sheds; this is applicable also for rooms in which highly inflammable gases or dust can develop. Doing so may lead to a fire!!

PRODUCT STRUCTURE DIAGRAM



PRODUCT SPECIFICATION

Model	Voltage	Frequency	Power	Operation Mode
14000077	110V	60 Hz	1500W	Remote

PRODUCT OPERATION MANUAL

Power Connection:

Plug the power cord into the power outlet, when you hear a "beep" the heater is now on standby mode.

ON/OFF Button:

Press the ON/OFF button and the product will start the fan at normal speed. Press the ON/OFF button again and the product will come to a stop after 30 seconds (In order to expel the heat of the PTC elements).

Please unplug the power cord if you want to cut off the power.

HEAT Button:

You can cycle through the heat settings: low, high or off by pressing the Heat button.

TEMPERATURE Button:

Press the TEMPERATURE button if you want to raise or lower the temperature.

TIMER Button:

The TIMER button will light up when pressed and the screen will flicker "0 H". To set the time, press the TIMER button again. It can be set between 0-12 hours.

LIGHT Button:

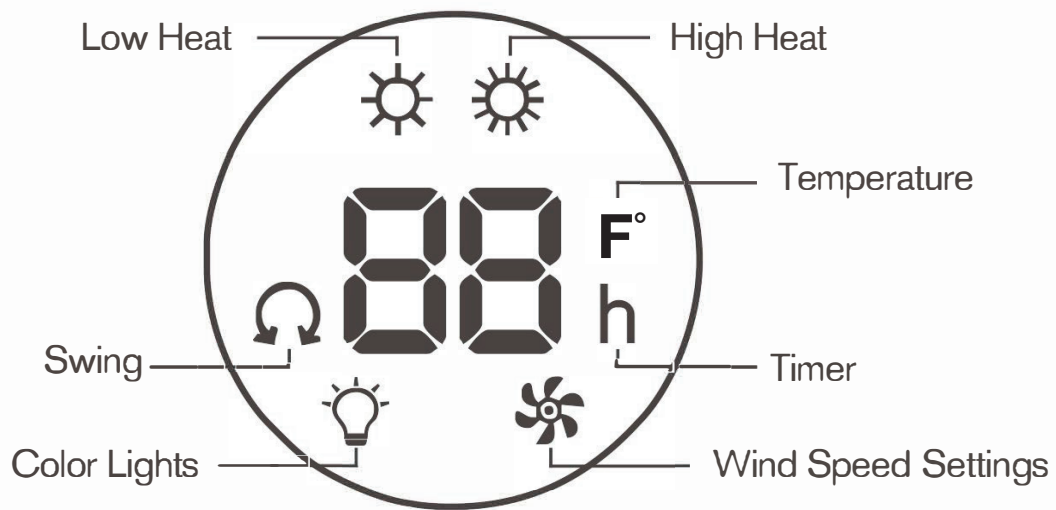
Press the Light button to turn on or off the LED light.

SWING Button:

Press the SWING button to turn on or off the swing function.

Screen Function:

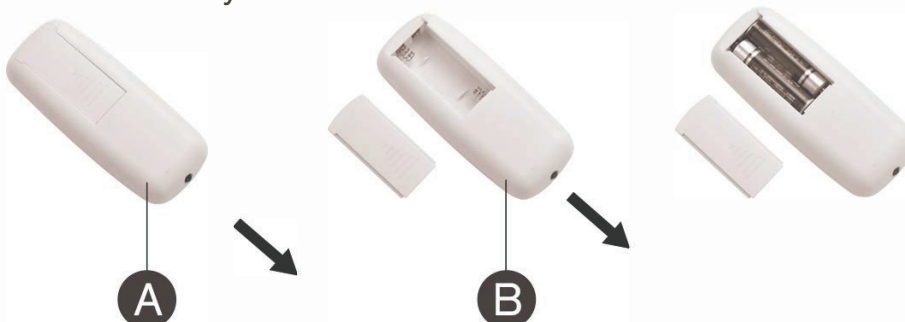
After 5 minutes, the brightness of all displays will reduce by half without affecting any functionality. Press any button to wake up the light. The remote control is equipped with corresponding function keys.



Instructions for Remote Control:

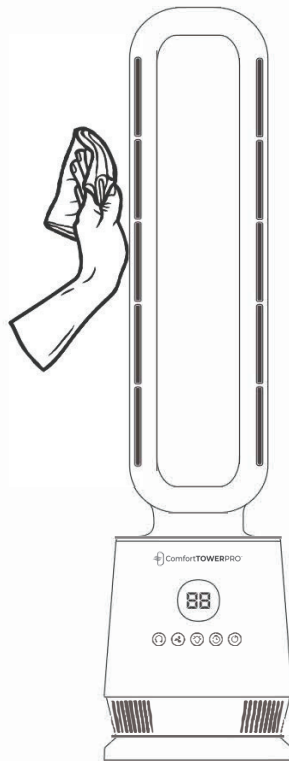
The remote buttons function the same as the buttons on the product.

1. Please change the battery if the remote doesn't work when you operate it near the product.
2. Keep the remote away from children.



CARE AND USE OF YOUR FAN

- Ensure that the fan is unplugged before cleaning and, if using in heat mode, allow to cool.
- Wipe the fan body clean with a clean, soft damp cloth.
- Do not use harsh detergents or abrasives to clean.
- Do not use polishes to clean.
- Do not immerse the fan or its cord in water or any other liquid.
- To prevent dust build-up, periodically clean both the Air Inlet and Air Outlet with a clean, soft cloth.



Storing:

1. After cleaning this appliance, allow it to air dry, then pack and store it in its original packaging.
2. This appliance should be stored in a location with a temperature below 105°F, good ventilation, and free from corrosive gases.

Thank you for choosing our Comfort Tower PRO Heating and Cooling Bladeless Fan, If you have any questions or need assistance, please feel free to contact us at any time



P.O. Box 9971 • Canton, OH 44711
www.FederatedConsumerProducts.com
1-800-731-3503